

Tłıchq Government Website Map Viewer User Manual

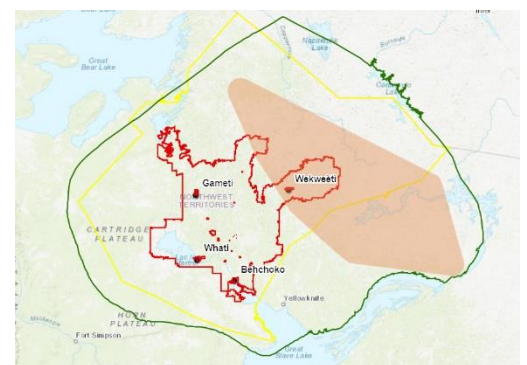
The Map Viewer is a web mapping that allows users to browse online parcel mapping information and data maintained by DEPARTMENT OF CULTURE & LANDS PROTECTION. We update the map on Tuesdays. This tool was designed to assist public in determining the disposition of the lands. Tłıchq Government Website Map Viewer is the primary tool that is used when making decisions on acceptance of land and cabin applications. The easiest way to familiarize oneself with this tool is to review the following introduction, and then explore the website by trying out each tool and use this User Manual. This User Manual provides some information about the website and an introduction to the functions for the Map Viewer.

Bathurst Caribou Management Zone

The Mobile Core Bathurst Caribou Management Zone exists as a wildlife management zone for barren-ground caribou under the Wildlife Act.

You must not hunt caribou inside this orange zone.

How do I use Tłıchq Government Website Map Viewer to find out the boundaries of the NO Hunting Zone?



2.0 How to access

Step 1: Open Google browser and type “Tlicho Government” and go to this address <https://www.tlicho.ca/>

Step 2: Click on this arrow and go to Tlicho Mapping page



3.0 How to use

The map element includes settings that can be switched on or off at design time

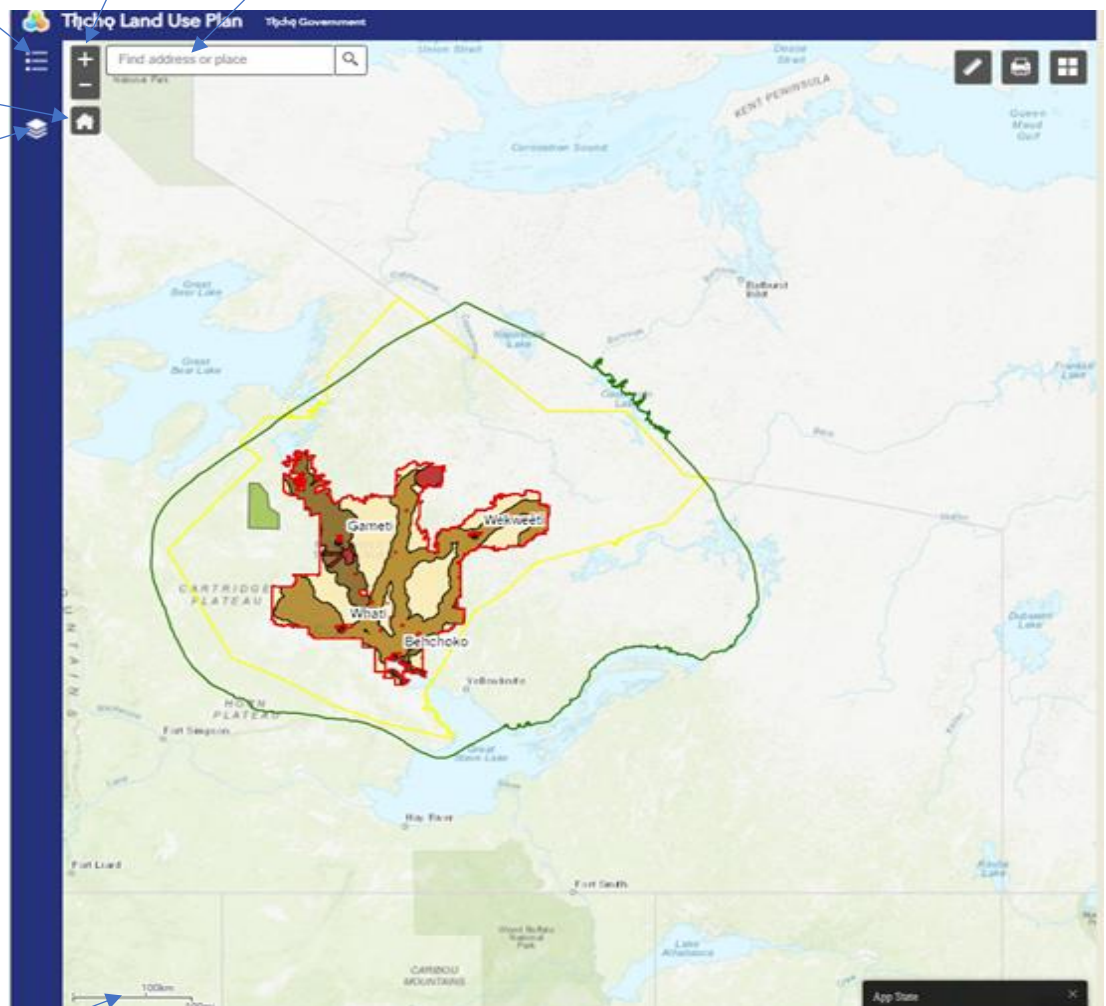
Legend—Displays the map's legend

Zoom In/Out—Allows you to zoom in or out on a map

Search—Allows users to find locations or search features on the map. By default, search uses settings configured in the web map. If these are not set, Dashboards uses the ArcGIS World Geocoding Service.

Default Extent

Layer Visibility—Allows you to switch operational layers on



Scalebar—Displays a scale bar in the lower corner of the map. The supported styles are line and ruler. When users are signed in, the display units reflect their profile settings. For anonymous access users, the style is always line and the units are dual (both United States and metric)

Measure distance and area

Print the map

Click here to select different base maps

Base map Switcher—Allows dashboard users to change the base map at run time

If you drag the scroll bar with the mouse more options appear

Pop-ups—When you click on a feature on the map it displays descriptive information about a feature when clicked

Click on dots to see 4 options to adjust

zoom to layer and hide and show labels

Layer visibility

layer transparency

Layer Visibility—Allows you to switch operational layers on

OFF and On Layers

Click on dots to see 4 options

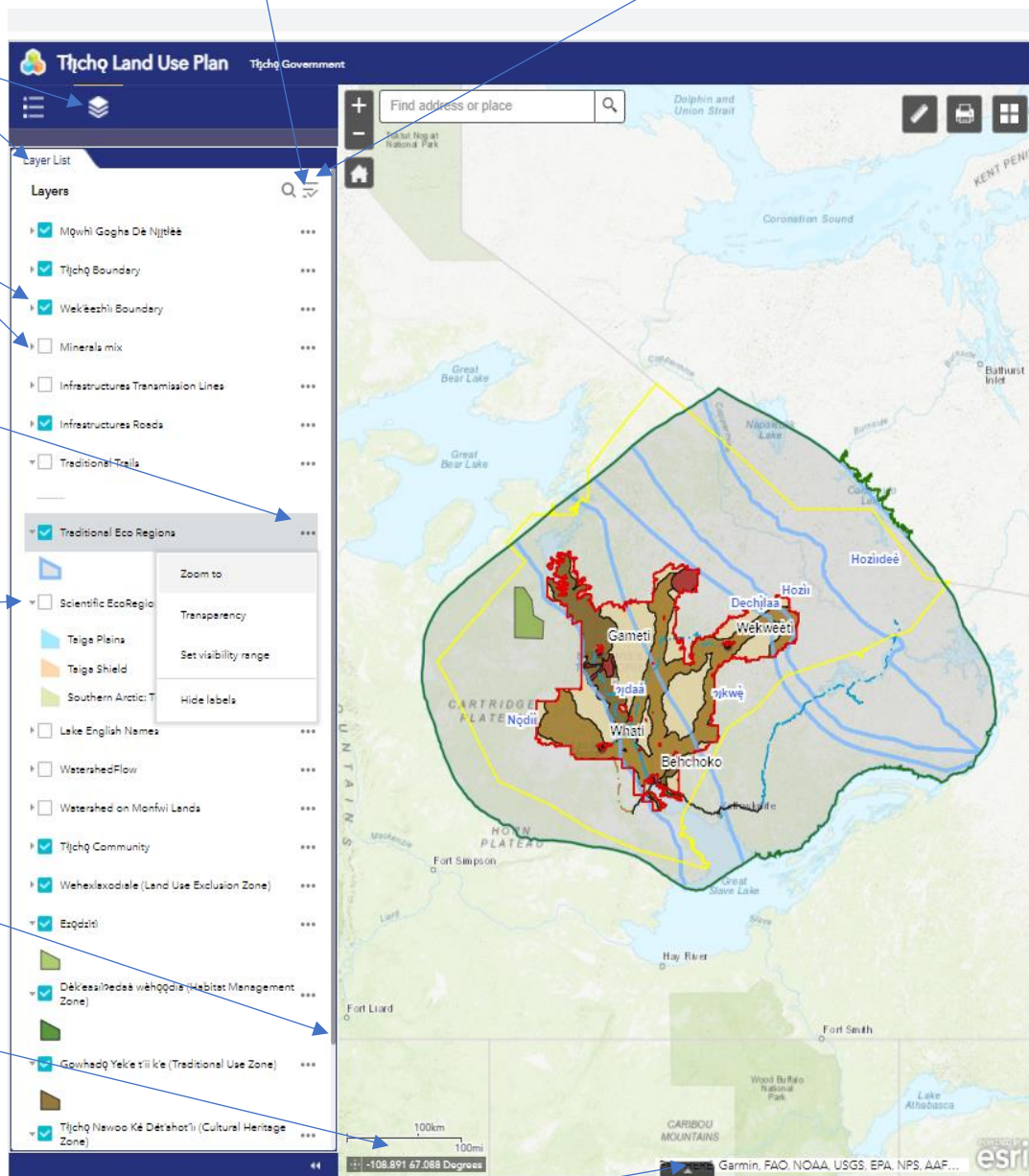
Click on the little arrow to turn the Legend off or on

Drag the scroll bar with the mouse, the window contents move correspondingly.

This box shows the point coordinates that Cruiser points to

If you click on this widget, you can turn on and off all layers, and expand (see) all layers and legends

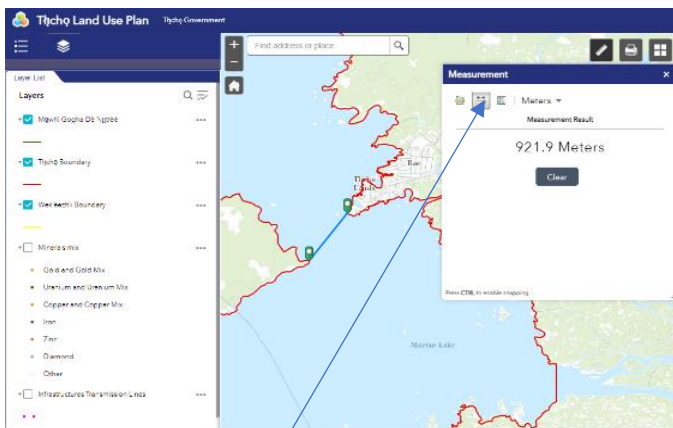
Turn all layers on
Turn all layers off
Expand all layers
Collapse all layers



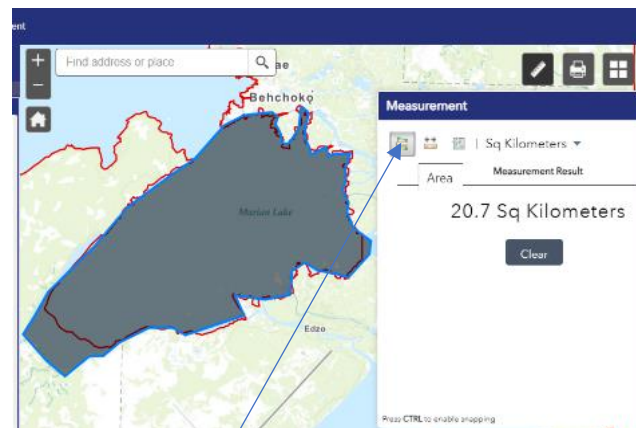
Click on the little arrow to open the attribute table

This little arrow allows you to select layers and see the attribute table

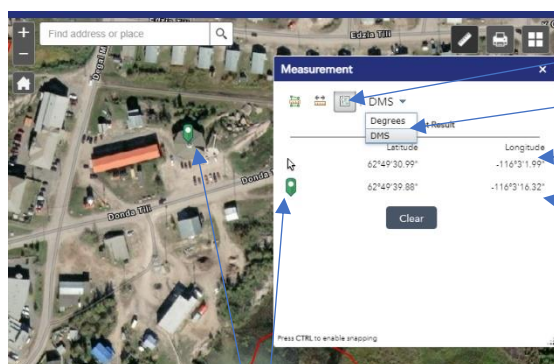
Filter by map extent			Zoom to	Clear selection	
FID	OBJECTID	Shape_Leng			
0	1	31.83			Mqwhi Gogha Dè Njıłlèe
1	1	31.83			Tłıchǫ Boundary
2	1	31.83			Wek'ezhli Boundary
3	1	31.83			Infrastructures Roads
4	1	31.83			Traditional Eco Regions
5	1	31.83			Tłıchǫ Community
					Wehexlaxodiale (Land Use Exclusion Zone)
					Ezodziti
					Dè'esslaxodiale wèhòddia (Habitat Management Zone)
					Gowhadq Yek'e t'li k'e (Traditional Use Zone)
					Tłıchǫ Nawoo Kè Dèt'ahot'li (Cultural Heritage Zone)
					Asii Haxiowii Gha Enehatoq (Enhanced Management Zone)



Measure distances



Measure areas



Mark and find coordinates

Select DMS or Degrees

It shows the coordinates of the point where your cruiser is located

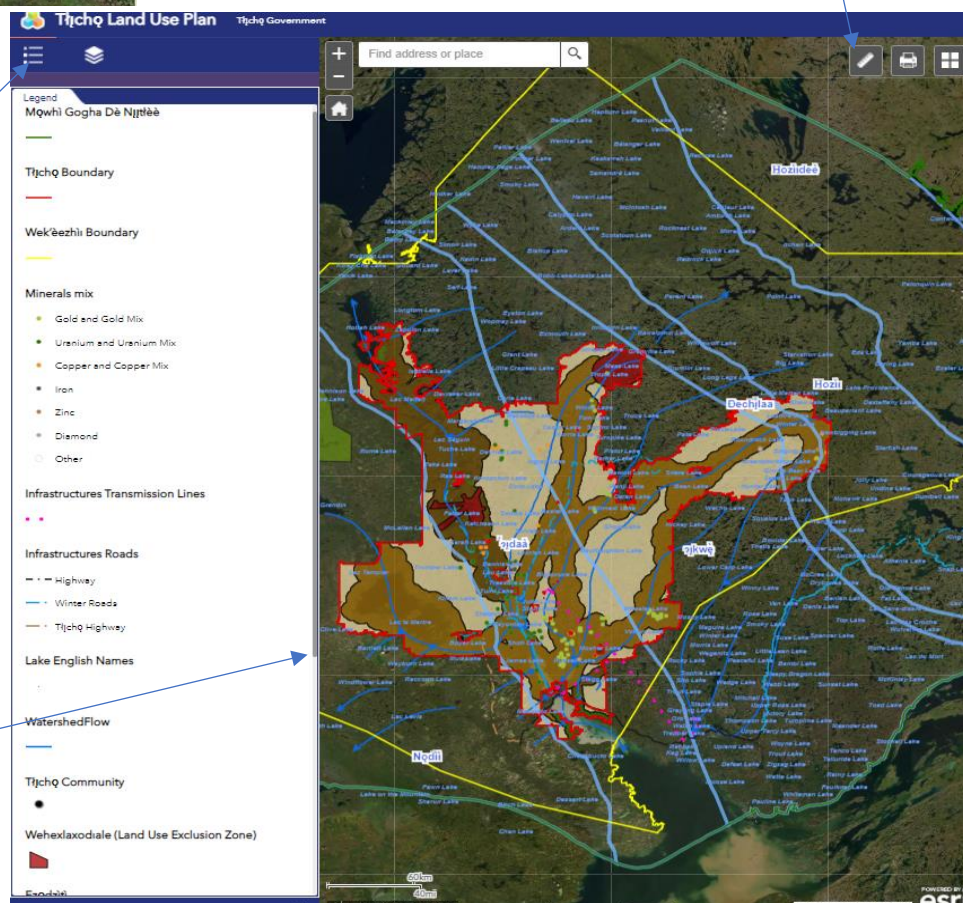
It shows the coordinates of the point where you put your marker

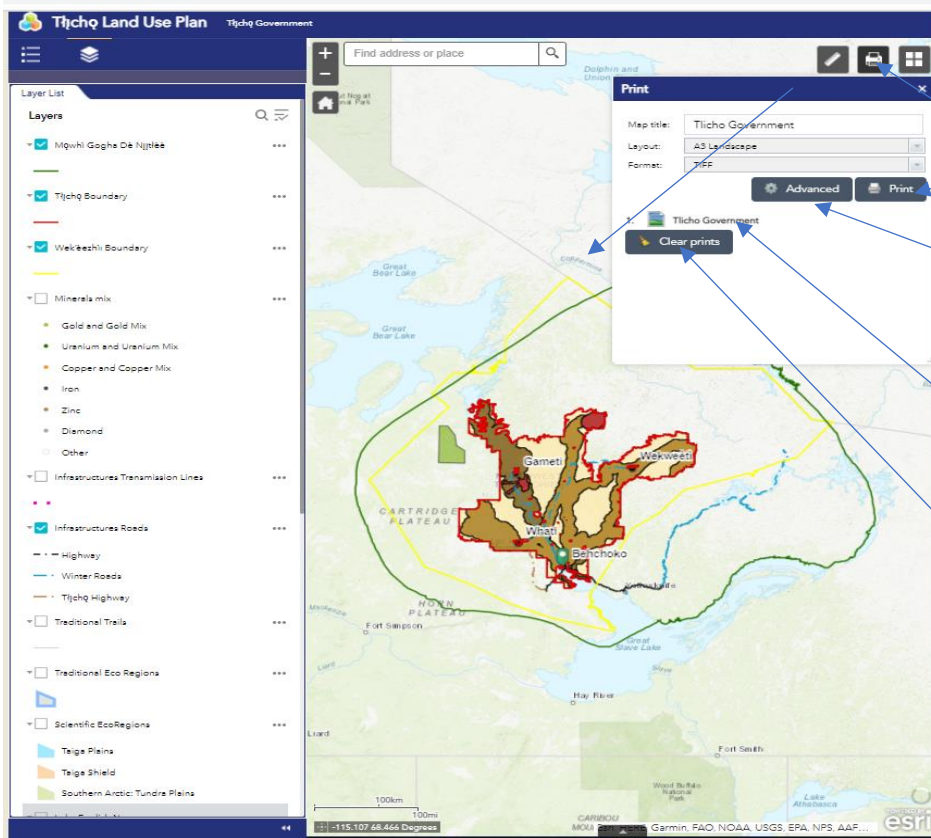
Marks a place and find its coordinates

Click on the desired location and mark it

Legend—Displays the map's legend

Drag the scroll bar to see all legends



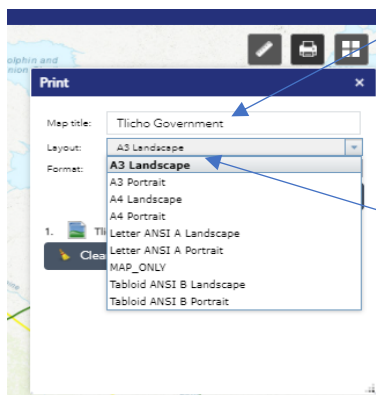


Print the map

Select if you want to make more settings

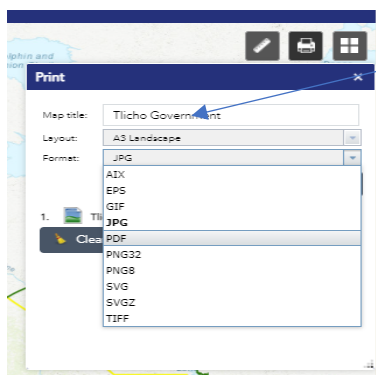
Click here to see the result

Select if you would like to delete the file

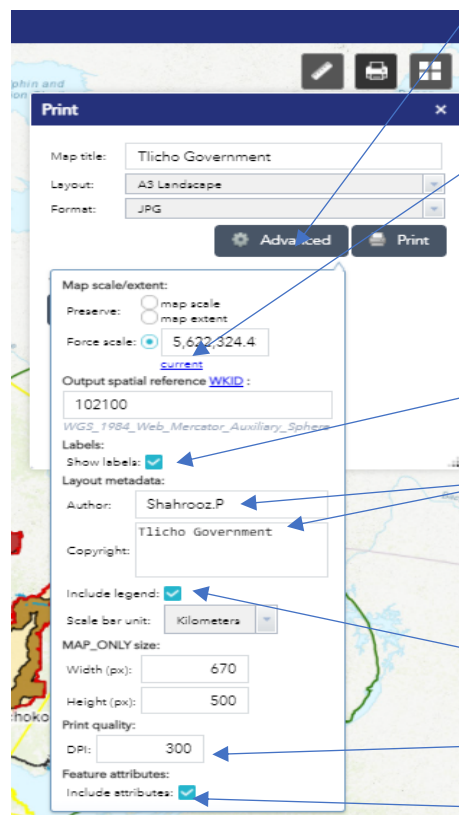


Type the title of the map

Choose the size of the print paper (A3 Landscape is a good option)



Choose the format of the file JPG or pdf



Select if you want to make more settings

Zoom in and out the map within the desired area and click on "current" option

Select Show labels

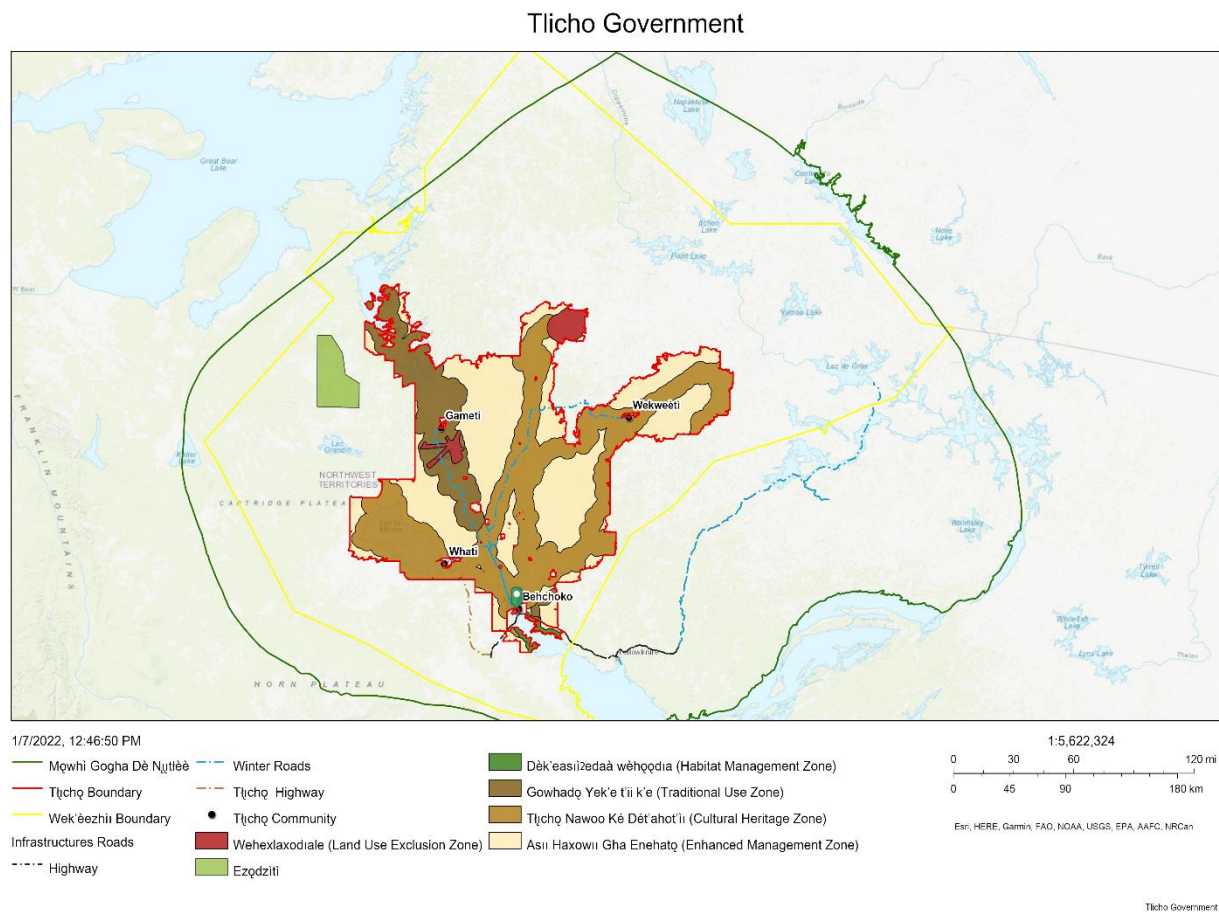
Type your name and organization or any other information

Select Include legend

Type 300 or higher

Select here

This is the result given the settings



3.0 Data Set Descriptions

Tłı̨chų Community Governments– The community governments of Behchokò, Whatì, Gamètì and Wekweètì were established with the signing of the Tłı̨chų Agreement on August 4, 2005

Boundaries

Tłı̨chų Land – This represents the boundary of the area in which the Government of the Tłı̨chų Territories has administration and control of the land. These boundaries are established Monfwi Land Claim

Mòwhì Gogha Dè Nı̨tlèè is the traditional use area of the Tłı̨chų, the boundaries of which were settled by Chief Monfwi during the signing of Treaty 11 in 1921. In this area, the Tłı̨chų are able to exercise their traditional land use activities as set out in the Tłı̨chų Agreement; and

Wek’èezhì is the area of land for which regulatory management boards (under the provisions of the Tłı̨chų Agreement and the Mackenzie Valley Resource Management Act) are established. Wek’èezhì includes Tłı̨chų lands, the four Tłı̨chų communities of Whatì, Gamètì, Wekweètì and Behchokò, as well as Crown land.

Municipal Boundaries – This represents the defined boundaries of geographic areas within which each community can realistically and regularly enforce its authority over all matters within its jurisdiction. The community boundary reflects a sense of common association whereby people within that boundary relate to the locality as a centre for services. The boundary is of such a size and scope as to allow the community government the capability to meet reasonable service demands for municipal services to be delivered in a cost-effective manner to all community residents.

Transportation Lines – This layer represents linear features such as roads, trails, winter roads. This layer displays automatically when zoomed in to a scale of 1:900,000 or closer.

4.0 Contact information; For more information related to Tłı̨chų Government Website Map Viewer User Manual contact:

Shahrooz Pirkoohi

GIS Coordinator
Department of Culture and Lands Protection

p: 867-392-6381 ext 1356

f: 867-392-6406

e: shahrooz.pirkoohi@tliche.ca

127 Donda Tili PO Box 412
Behchokò, NT X0E 0Y0

www.tliche.ca

Terrell Knapton-Pain

GIS Intern
Department of Culture and Lands Protection

p: 867-392-6381 ext 1337

f: 867-392-6406

e: Terrell.KnaptonPain@tliche.ca

127 Donda Tili PO Box 412
Behchokò, NT X0E 0Y0

www.tliche.ca