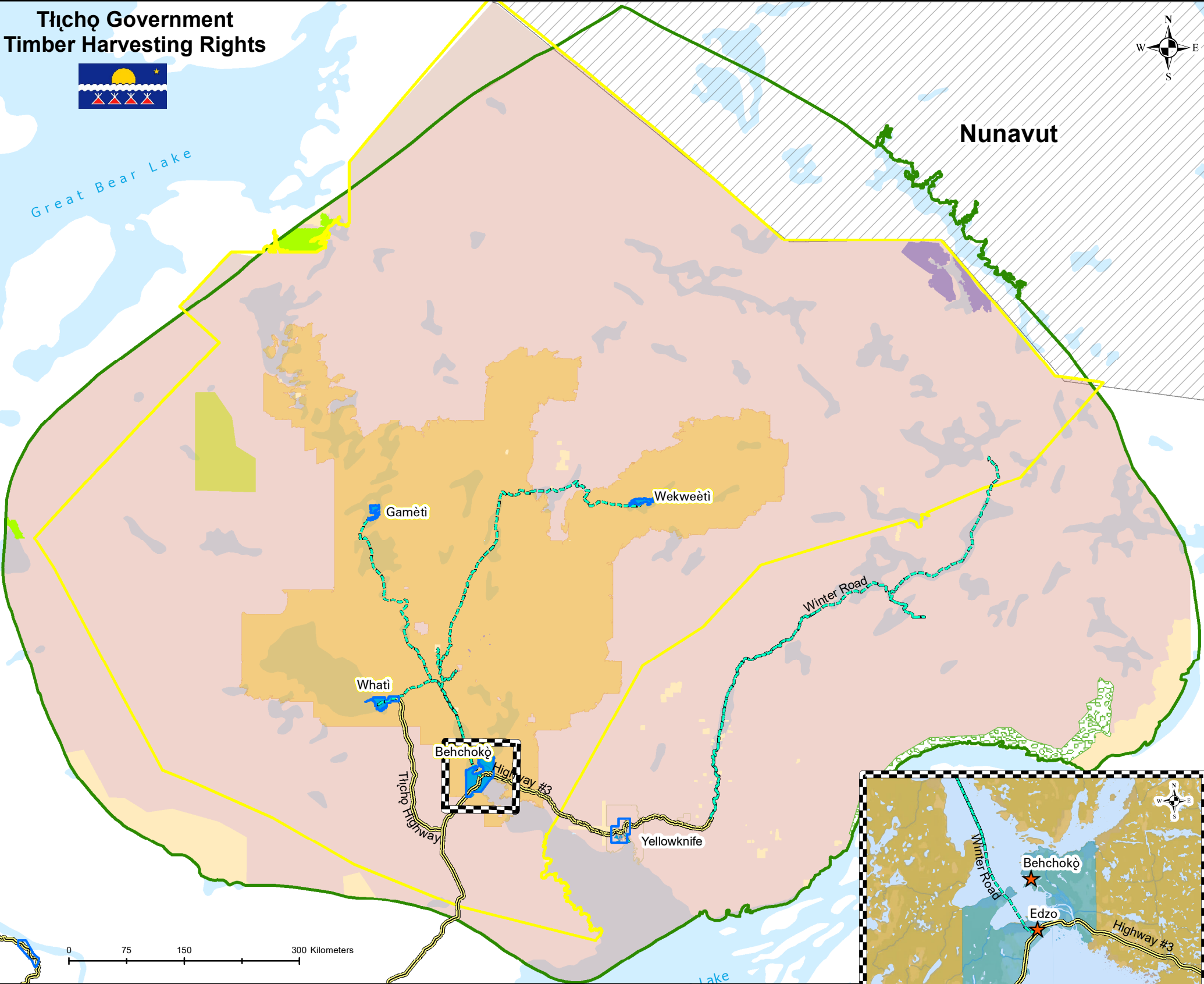


# Tłıçq Government Timber Harvesting Rights



- |           |                            |                                 |             |                     |
|-----------|----------------------------|---------------------------------|-------------|---------------------|
| Federal   | Private                    | Ezqdziti                        | Tłıçq Lands | Wek'èezhìi Boundary |
| Nunavut   | Sahtu                      | Territorial                     | Road        | Winter Road         |
| Municipal | Territorial Protected Area | Mqwhi Gogha Dè Nıttlèè Boundary |             |                     |

