

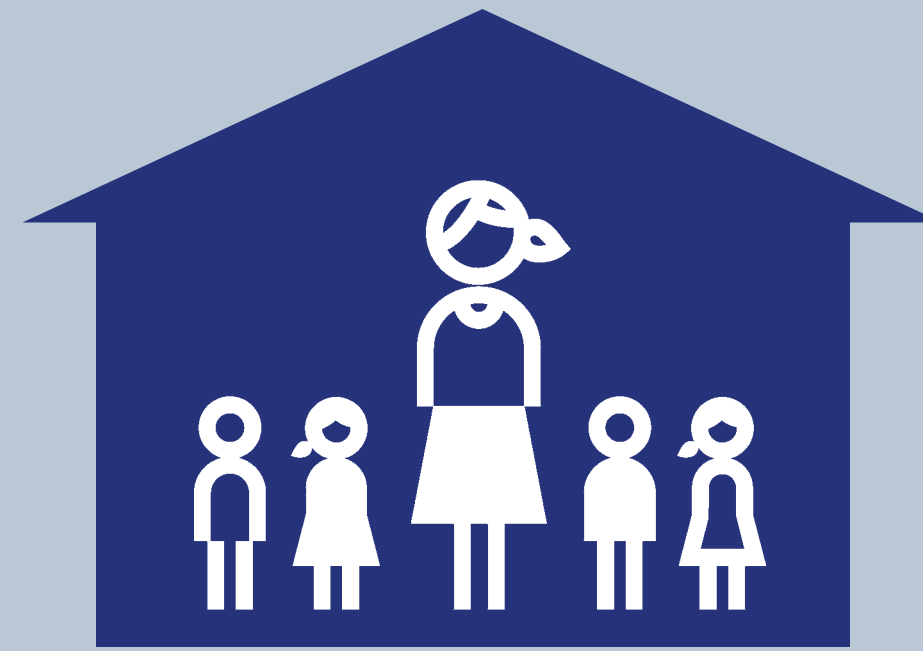
Early childhood education & student support



Changes to early childhood education and student support have been monitored since the opening of the Tłıchǰ Highway, November 30, 2021.

The highway opening coincided with COVID-19, followed by 2023 fire evacuations. Data should be considered within this context.

ECE SPACES



As of August 2024, there were 61 early childhood education spaces in Behchokò and 30 in Whatì.

These numbers have remained the same since 2019-2020.

Behchokò

- 61 ECE/childcare spaces

Whatì

- 30 ECE/childcare spaces

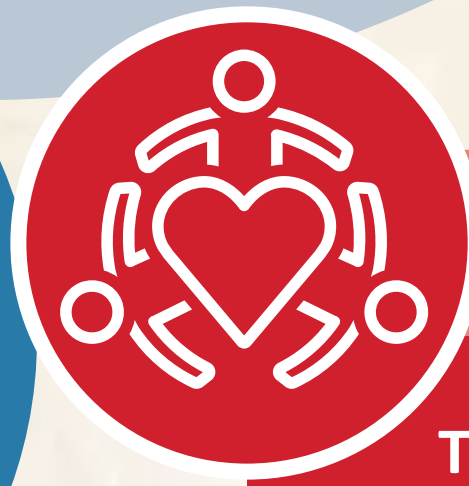


STUDENT ASSISTANCE

Students approved for financial assistance

In 2023-2024, Behchokò had **46 students** approved for student financial assistance funding, while Whatì had **7 students** approved. This is an **increase** from 2022-2023, when Behchokò had 36 students approved for student financial assistance. Whatì was unchanged at seven students approved that year.

In 2020-2021, Behchoko had 35 students approved and Whatì had fewer than seven approved.



PROGRAMS & SERVICES

The Tłıchǰ Government's Department of Early Childhood Programs provides various workshops and programming, including those specialized for families and children with special needs. It runs preschool programs in the two daycares in Behchokò for children ages two to three, as well as the after-school programs. The programs provide continuous year-round daycare services for families, including at-home educational materials and books.

Tłıchǰ Government initiatives worked on this past year include:

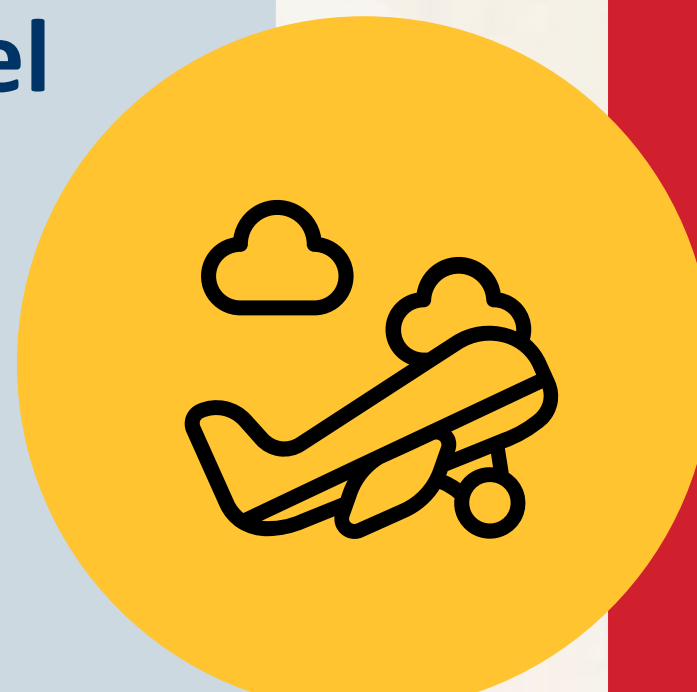
- Building an Early Childhood Family Resource Centre in Behchokò.
- Developing increased services in oral language development and occupational therapy.
- Developing a Tłıchǰ Early Years Law ensuring Tłıchǰ authority and decision-making power over all areas of early learning and childcare.
- Developing a Martin Family Initiative partnership focusing on the creation of Tłıchǰ culture, language, and way of life parenting resources and services.
- Providing supports for citizens and staff in successfully completing early learning and childcare courses online and through distance learning programs.
- Developing visionary goals of what a Tłıchǰ Early Years Education Program could be for future work and training.
- Funding for full-time Tłıchǰ students in post-secondary through Our Nation's Education (ONE) Student Financial Support Program. This program provides 'top-up' funding to anyone in an undergrad, master's, or doctoral degree program.
- Access to courses through the School of Continued Learning through MacEwan University, fully funded by the Tłıchǰ Government.



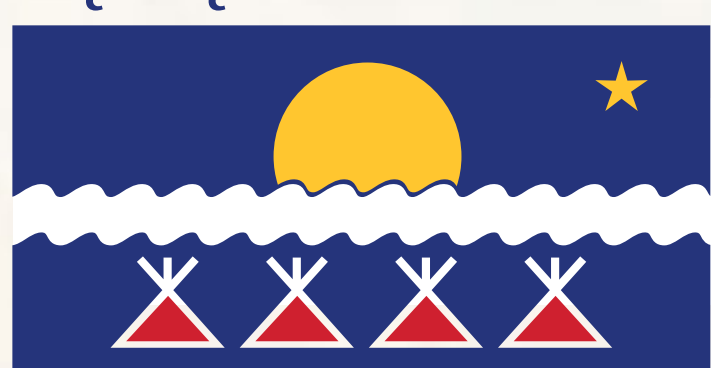
Student financial assistance for travel

In 2022-2023, Behchokò reported having **13** applicants for student assistance travel funding.

This **decreased** in 2023-2024 with **11** applicants for SFA travel funding. Due to smaller numbers, Whatì's applicant numbers have not been publicly reported.



Tłıchǰ Ndek'áowo



Tłıchǰ Government

The Tłıchǰ Highway Socio-Economic Working Group was established in 2019 to monitor the impacts of the new highway on overall health and well-being in Whatì and Behchokò. With representatives from the community governments of Whatì, Behchokò, the Tłıchǰ Government and the Government of Northwest Territories, the working group releases progress reports once per year. This series of posters — on child & family services, community safety, cultural well-being, early childhood education & student support, economic well-being, and health & well-being — highlights what the working group has found.

SOURCES: TG AND GNWT | PHOTOS: TG AND FIRELIGHT