

ATLAS Map Viewer User Manual

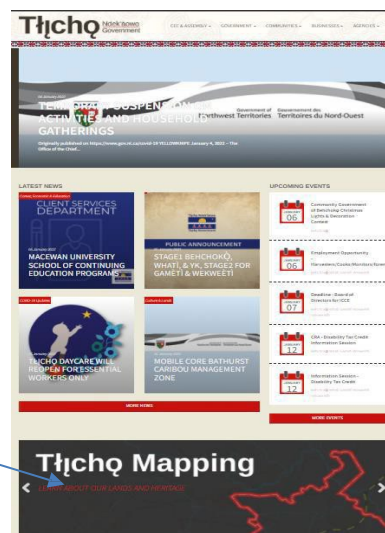


This is a web mapping that allows users to browse online parcel mapping information and data maintained by DEPARTMENT OF CULTURE & LANDS PROTECTION. This help document introduces the components of Tłıchǫ hǫ mapping and how to use them. This tool was designed to assist public in determining the disposition of the lands. Tłıchǫ hǫ Government Website mapping tool is the primary tool that is used when making decisions on acceptance of land and cabin applications. The easiest way to familiarize oneself with this tool is to review the video (hyperlink) and then explore the website by trying out each tool and use this User Manual. This User Manual provides basic information about the website and an introduction to the functions for the Map Viewer

Step 1: Open Google browser and type “Tlıcho Government” and go to this address

<https://www.tlıcho.ca/>

Step 2: Click on this arrow and go to Tłıchǫ hǫ Mapping page



Basic Tools:



Press the *Home* tool to return to the introductory page. Press the *Show Layer List* tool to show the list of layers for the map.

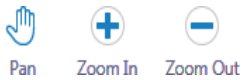


Press the *Print* tool to open the dialog to create a printable PDF version of the map that is suitable for printing. Any markup or measurements that you have added will also be displayed on the map. The tool asks you to select a paper size and orientation, as well as a scale for the output map. You will then have the ability to specify up to two lines of optional Title Text and up to three lines of any optional additional text that will display on the output PDF map.

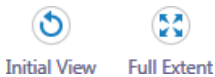


The *Export Map* tool makes it possible for users to export the current map image in different file formats so that it can be inserted into other documents or email messages.

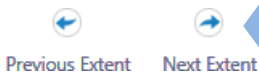
Navigation Tools:



Press these navigation tools, and then drag the mouse in the map window to complete pan or zoom functions.



Return to the *Initial View* map extent to quickly zoom the map to the all of the communities of the Northwest Territories. Or press *Full Extent* to zoom to the full extent of the mapping data.



Press these tools to return the zoom level to the *Previous Extent(s)* or advance to the *Next Extent(s)* that you have viewed.

HOME

TŁIČHQ MAPPING

Tłıchq Government

Home 3D Map

Search: []

- The non-hunting zone for caribou starting on October 22
- Tłıchq Community
- Community Civic Address
- CommunityBuildingFootPrint
- Community Government lands
- Mow
- Wek
- Tłıch
- Activ
- Mine
- Tłıč'a
- Man
- De V
- Zone
- Tłıč
- Herit
- Asi
- Man
- Gow
- Use
- Dina
- Withdrawal
- Live Stream Gauges
- Access trail
- Transportation line
- Thaidene Nene National Park Reserve
- Edézhzıe National Wildlife Area and Dehcho Protected Area
- Infrastructures Transmission Lines
- Traditional Eco Regions Names

Tłıchq Government

This web-based mapping tool allows users to access and explore online parcel mapping information and the TK data managed by the Department of Culture and Lands Protection. It is designed to assist the public in determining the status of lands. The Tłıchq Government Atlas is the main tool used for making decisions on land and cabin applications. To get started with this tool, it's recommended to explore the website by trying out each feature along with the user manual.

OK

Gulf of Alaska

Edmonton

Vancouver

Seattle

Portland

Minneapolis

Chicago

Denver

Salt Lake City

Kansas

Columbus

St. Louis

Washington

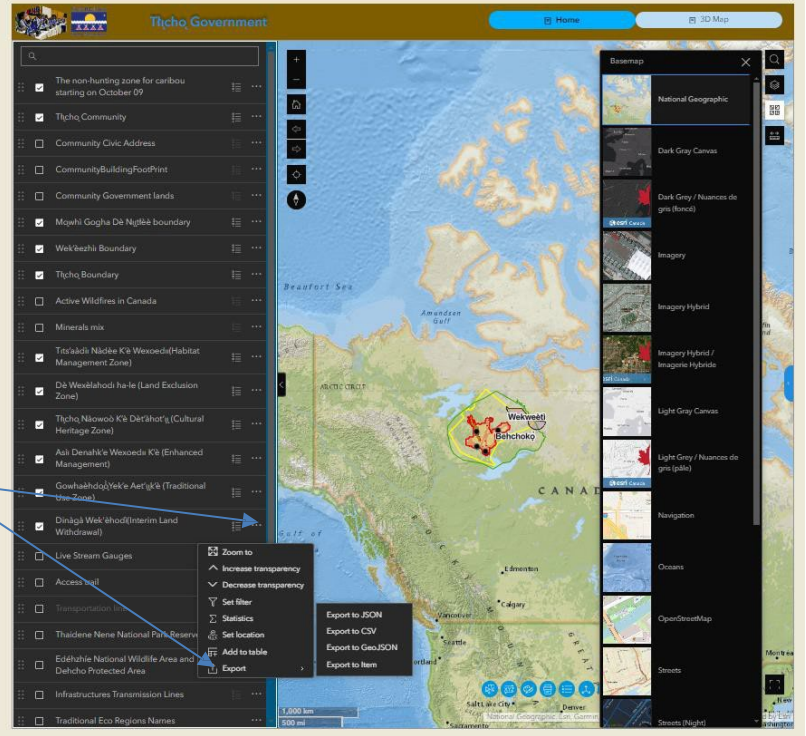
1,000 km

500 mi

Selected features: 0

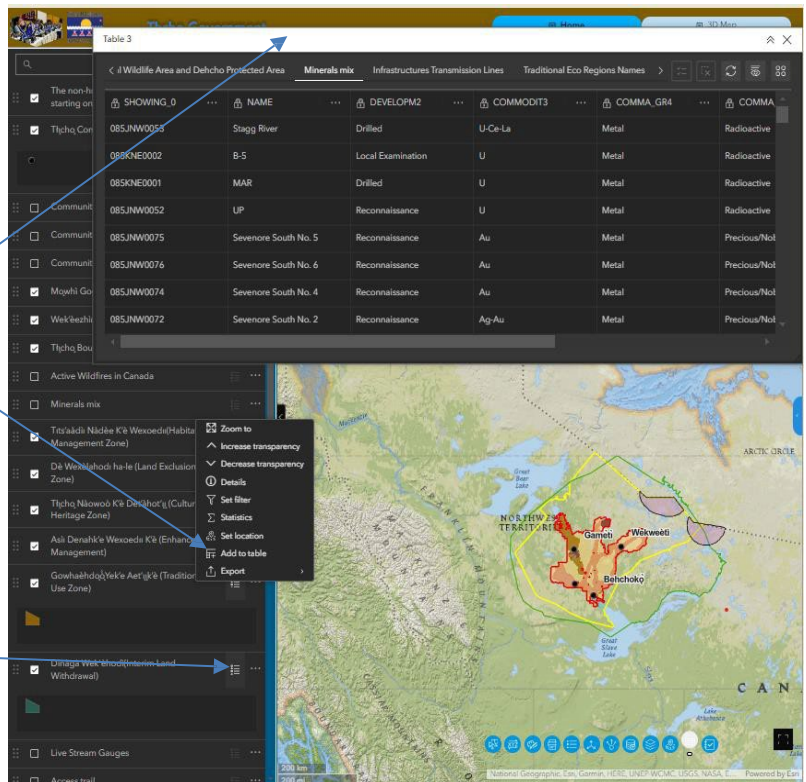
Powered by National Geographic, Esri, Garmin, HERE, UNEP-WCMC, USGS, NASA, E...

TŁIČHO MAPPING



Clicking on the three-dot icon
Downloading layers using this tool and the export icon

Use this online tool to convert Geo Json to Shapefile
<https://mygeodata.cloud/converter/geojson-to-shp>



Clicking on the add to table icon
The table containing all the layer fields and data appears.

To view the legend for each layer, click on this icon.

To view the legend for each layer, click on this icon.

To view more layer, click on this arrow

Show/hide fields

To view more functions

Clicking here allows you to configure the filters table.

By clicking here, the entire table can be downloaded in CSV, Excel format

The screenshot displays a GIS application interface. At the top, there are several tabs: "Wildlife Area and Dehcho Protected Area", "Minerals mix", "Infrastructures Transmission Lines", and "Traditional Eco Regions Names". The "Minerals mix" tab is active, showing a data table with the following columns: SHOWING, NAME, DEVELOPM, COMMODIT, and COMMA. The table contains several rows of data, including "Stagg River", "B-5", "MAR", "UP", "Sevenore South No. 5", "Sevenore South No. 6", "Sevenore South No. 4", and "Sevenore South No. 2".

On the left side, there is a layer list with various zones and areas, such as "Active Wildfires in Canada", "Minerals mix", "Tit'aáidá Nádeé K'e Wexoedii (Habitat Management Zone)", "Dá Wexélahodi ha-le (Land Exclusion Zone)", "Tłı̄ch'ı̄ Nı̄owod K'ı̄ Dı̄ł'áhot'ı̄ (Cultural Heritage Zone)", "Aáı Dena'h'k'e Wexoedı K'ı̄ (Enhanced Management)", "Gowhaáhdı̄ł'ı̄k'e Aet'ı̄k'ı̄ (Traditional Use Zone)", "Dı̄nágá Wek'áhodı (Interim Land Withdrawal)", "Live Stream Gauges", and "Access trail".

At the bottom, there is a map showing a geographical area with various zones and labels like "NEW TERRITORY", "Wekweeti", and "Behchoko". The map includes a scale bar and a legend.

Clicking here allows you to configure the filters table.

Enable and disable the widget

Adding widgets Multiple widgets can be added

Selecting the conditions and clauses.

Selecting the fields

Selecting a group of identical rows in each field

Choosing the data source by either typing or selecting from a dropdown list.

Tĺ̨ch̨́o Community	Mowh̨́i Gogha D̨́e Nijĺ̨eh̨́ boundary	Weḱ̨'ezh̨́i Boundary	Tĺ̨ch̨́o Boundary	COMMODIT3	COMMA_GR4
3,0	NAME	DEVELOPM2	COMMODIT3	COMMA_GR4	
753	Stagg River	Drilled	U-Ce-La	Metal	
02	B-5	Local Examination	U	Metal	
01	MAR	Drilled	U	Metal	

Select source type

- User input
- Field
- ✓ Unique

Choosing the data source by either typing or selecting from a dropdown list.

- is not
- starts with
- does not start with
- ends with
- does not end with
- contains
- does not contain
- is any of
- is none of
- is blank

Selecting the conditions and clauses.

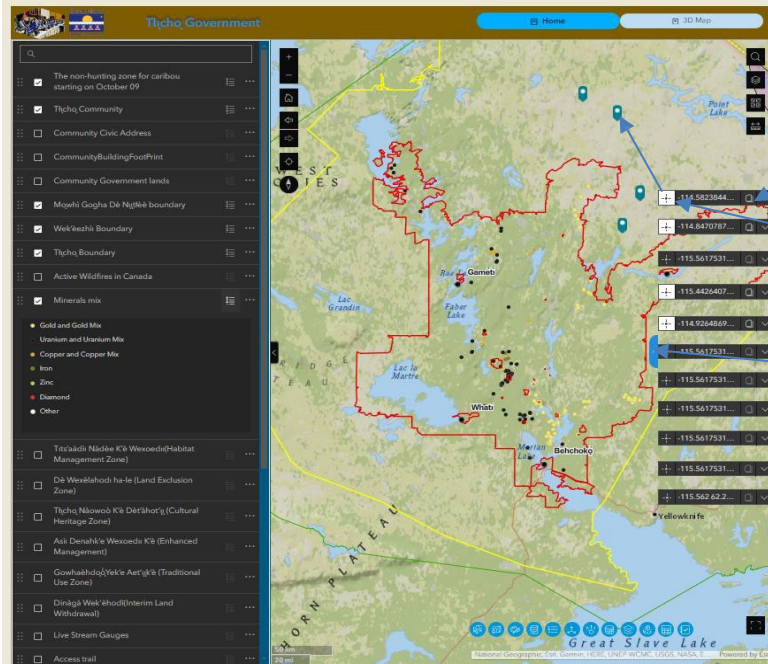
- FID
- SHOWING_0
- NAME
- DEVELOPM2
- COMMODIT3
- COMMA_GR4
- COMMA_SUS5

Selecting the fields

AND OR

When using several filters and conditions, please note that it can affect the results of the filter, "and" means that each condition must be true. (or) It means that one of the conditions must be true

TŁIČHQ MAPPING

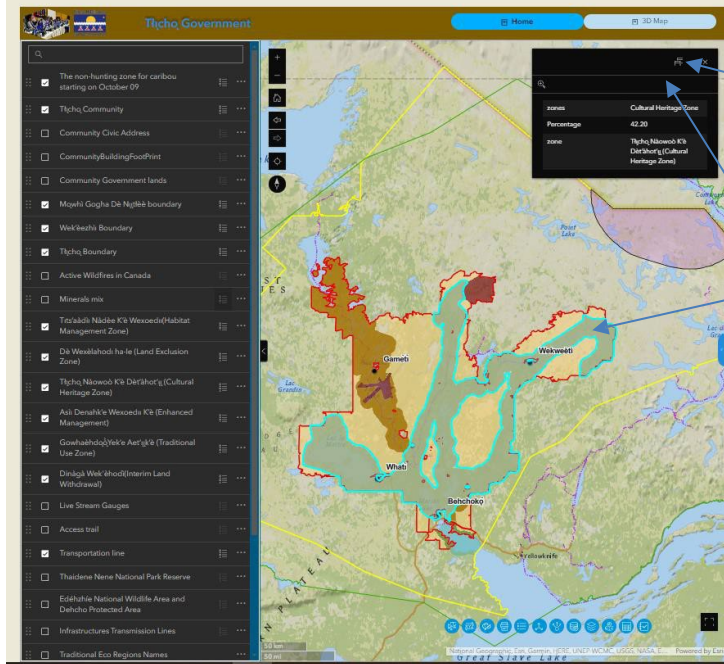


Copy and past the coordinates

Enable map clicking to obtain point coordinates. Then, click on the map.

Opening and closing the coordinates window.

TŁIČHQ MAPPING

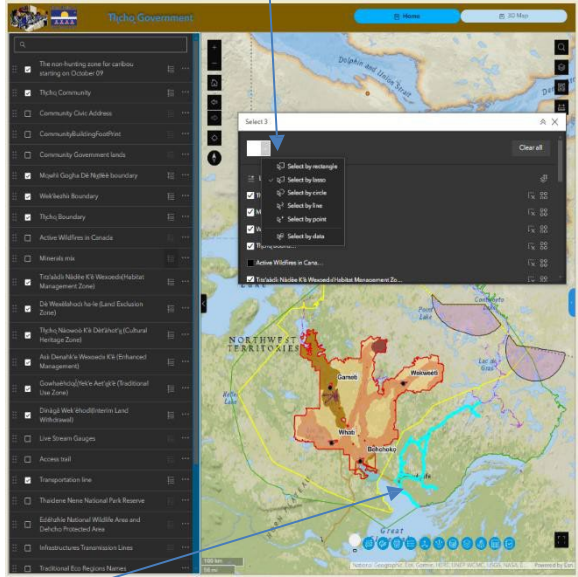
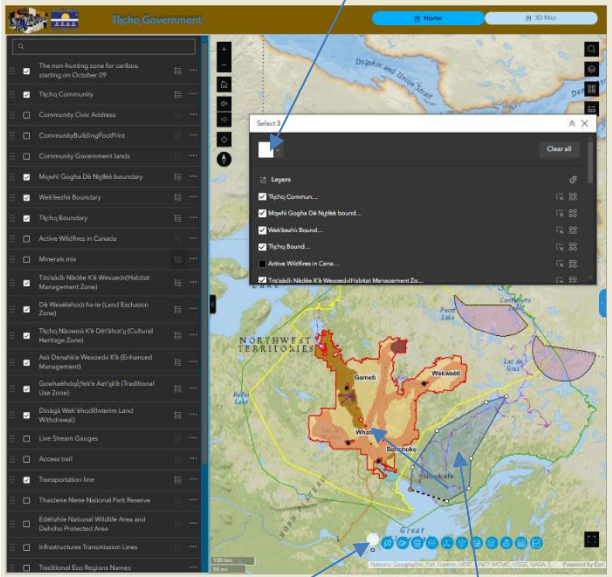


Click on this sign to move the information box appear.

Click on the layer to select it, and the layer information box will appear.

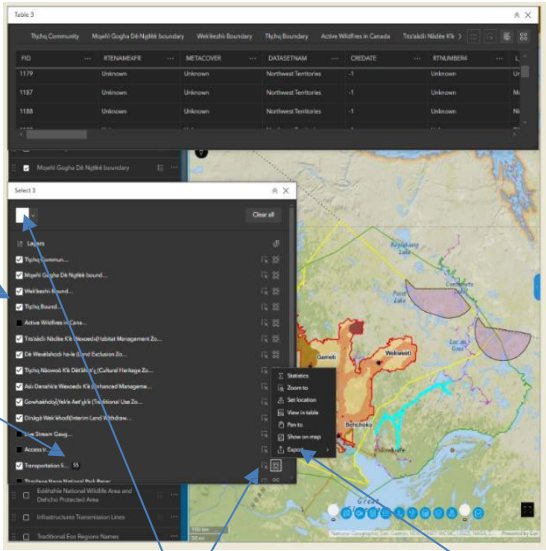
Click on here to activate the widget

Click on here to use different selection tool



Click on the select widget

After selecting a tool type, draw in the area of interest to choose the layer.



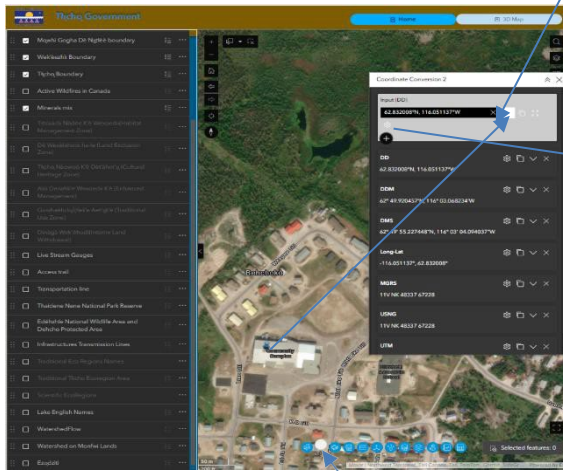
Active selectable layers

Number of the selected row

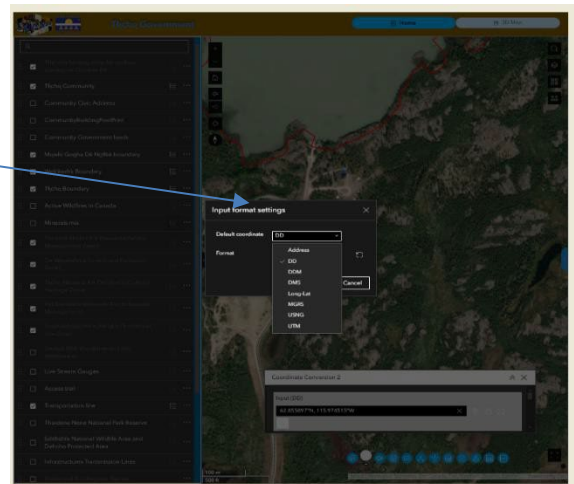
Deactivate the selected layer when this widget is not in use.

Export selected layer

Coordinate conversion widget

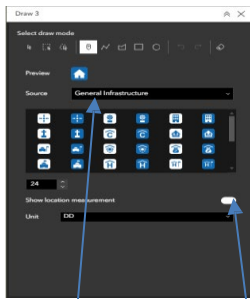


Delete the selected point

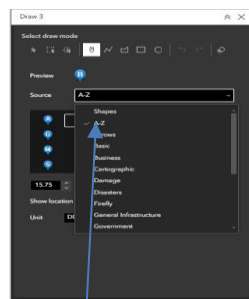


Click on the coordinate conversion widget

Drawing widget



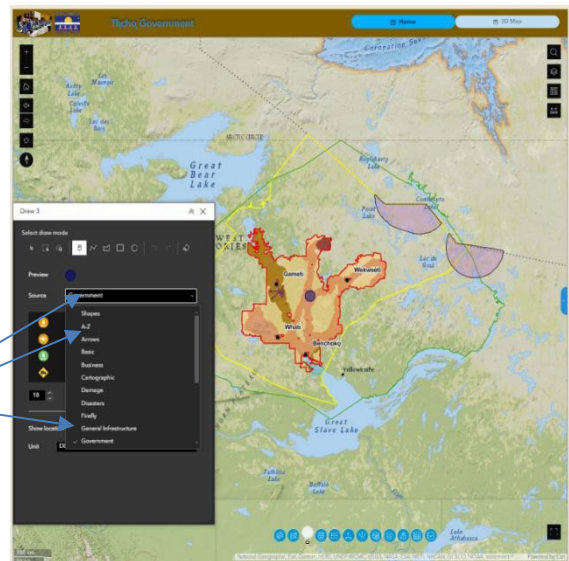
Select the General infrastructure to show burial sites cabins, ...



Select the A-Z to draw points in order for you to reference later

Choose a type of symbol:

Enable the measuring functions

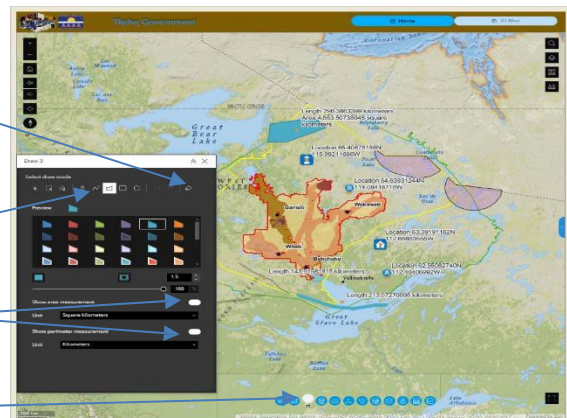


All draws can be erased

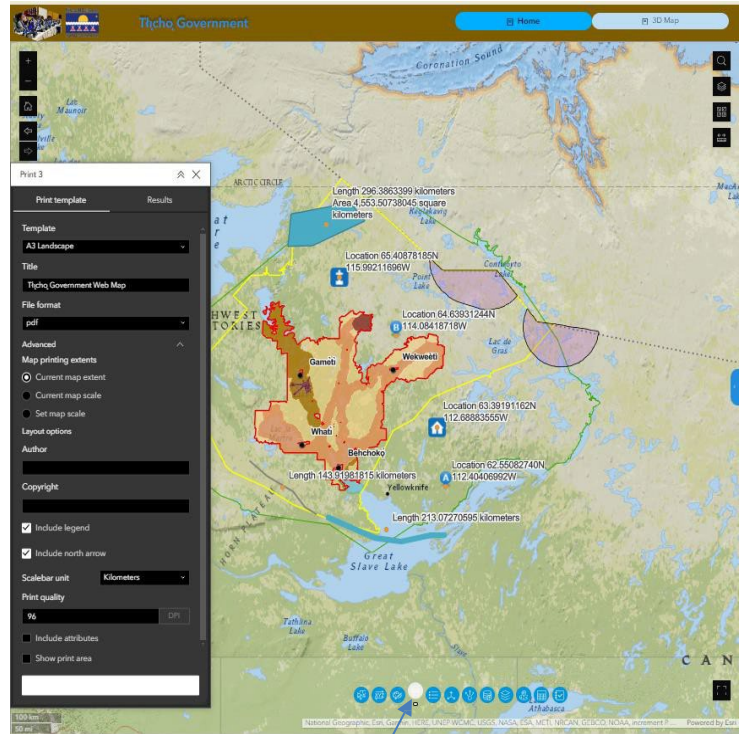
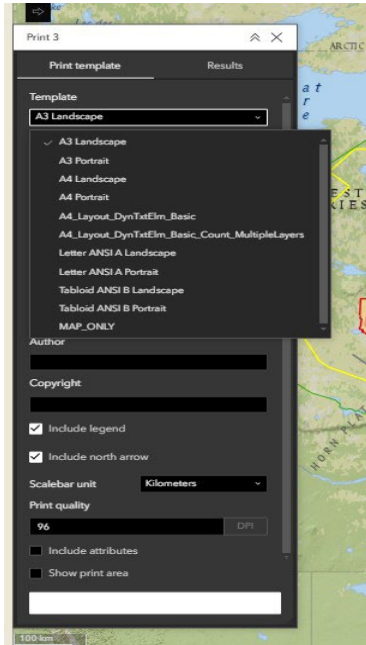
Choose a type of draw

Enable the measuring functions

Click on the drawing widget



Printing widget: The map or the drawing can be printed out.



Printing widget

Select a map size

Type a title

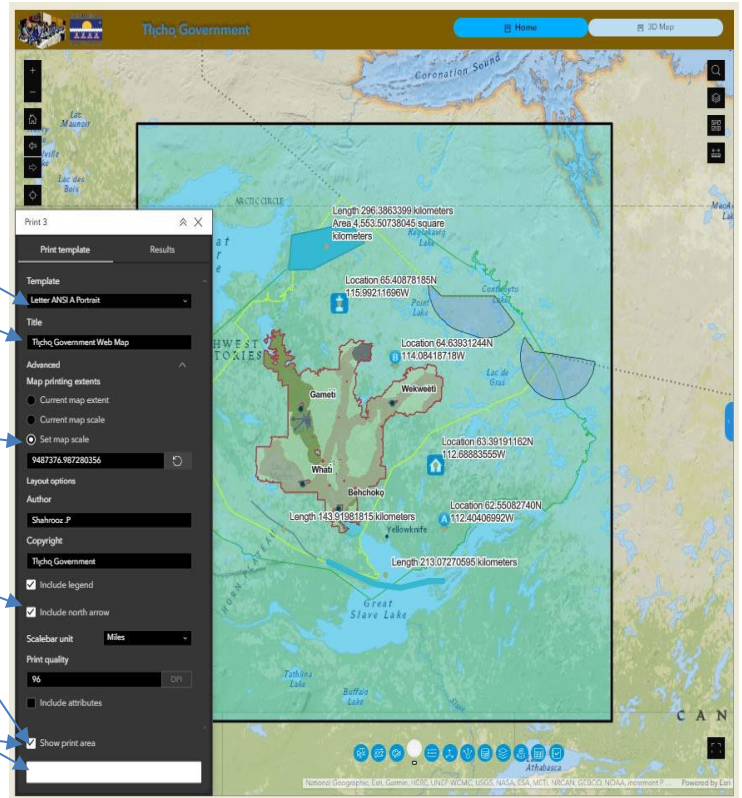
Select show print area

Set an extent

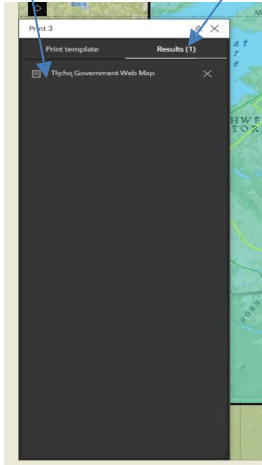
Include the legend and arrow

Click the print button

After printing is complete, deselect the "Show Print Area" option.

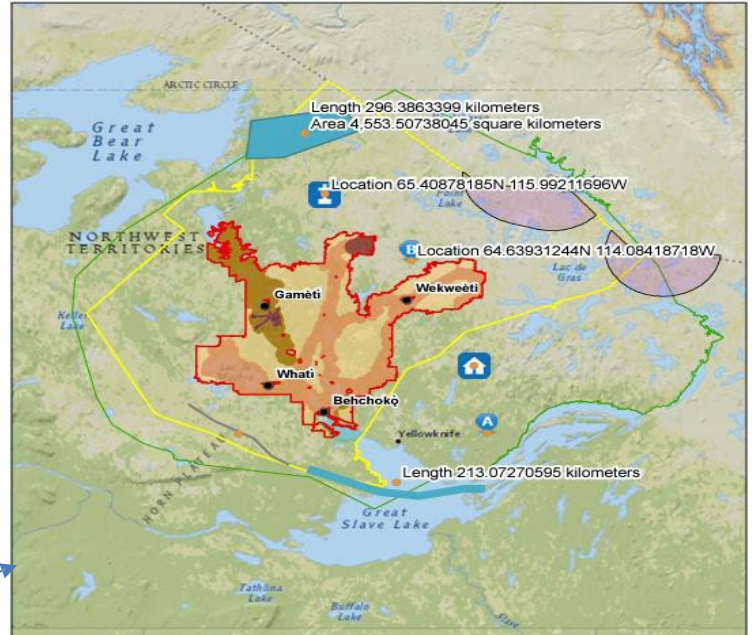


To see and download the map click on the pdf file here



The map in PDF format

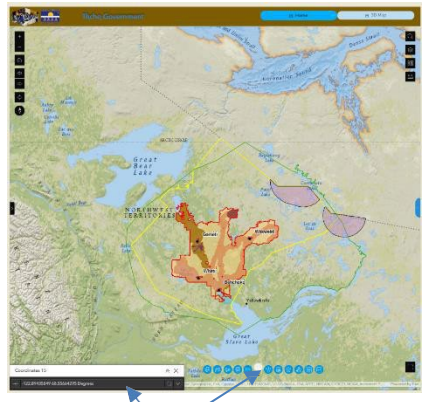
Tłı̨chǫ Government Web Map



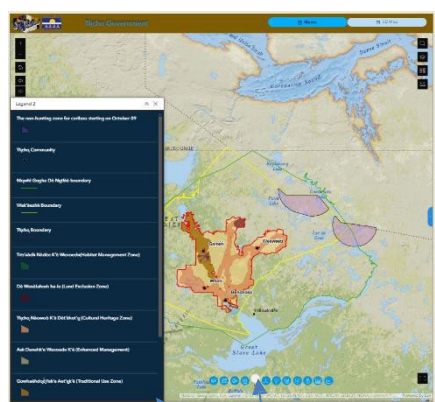
10/10/2024, 3:24:36 PM

<ul style="list-style-type: none"> The non-hunting zone for caribou starting on October 03 Tłı̨chǫ Community Moosehide Gage De Hukla boundary Wekweéti Boundary Tłı̨chǫ Boundary 	<ul style="list-style-type: none"> Tłı̨chǫ Níłéne K'á Wááwééshí Management Zone De Wááwééshí Páá (Land Exclusion Zone) Tłı̨chǫ Níłéne K'á Dáwáwééshí (Cultural Heritage Zone) Aáí Dáwééshí Wááwééshí K'á (Enhanced Management) Qáwáwééshí K'á Aáí Dáwééshí (Traditional Use Zone) Dáwééshí Wááwééshí (Traditional Use Zone) 	<p>1:9,487,377</p> <p>0 35 70 140 mi 0 55 110 220 km</p> <p>National Geographic, Esri, Garmin, HERE, UNEP-WCMC, USGS, NASA, ESA, METI, INRCAN, IGN, GEBCO, NOAA, increment P Corp.</p>
---	---	--

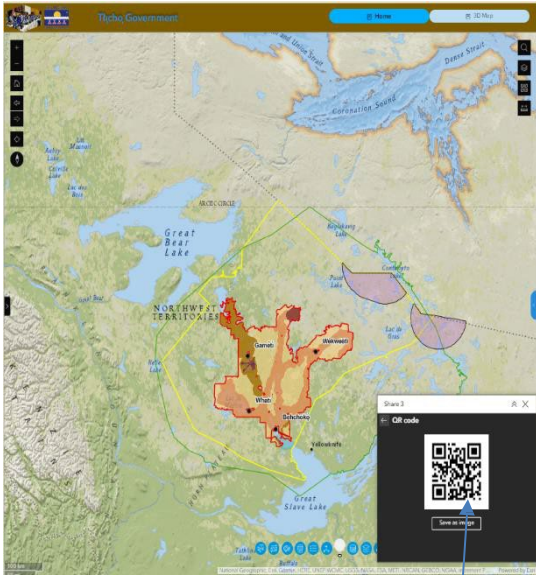
Shafiqz, P
Tłı̨chǫ Government



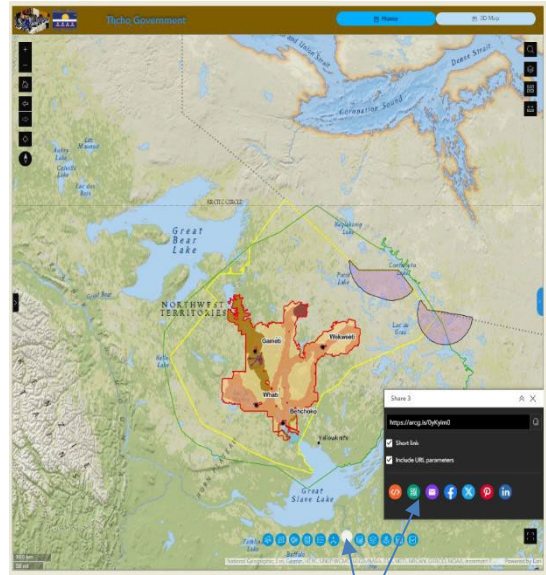
legend widget



legend widget



This map can be shared through QR code.

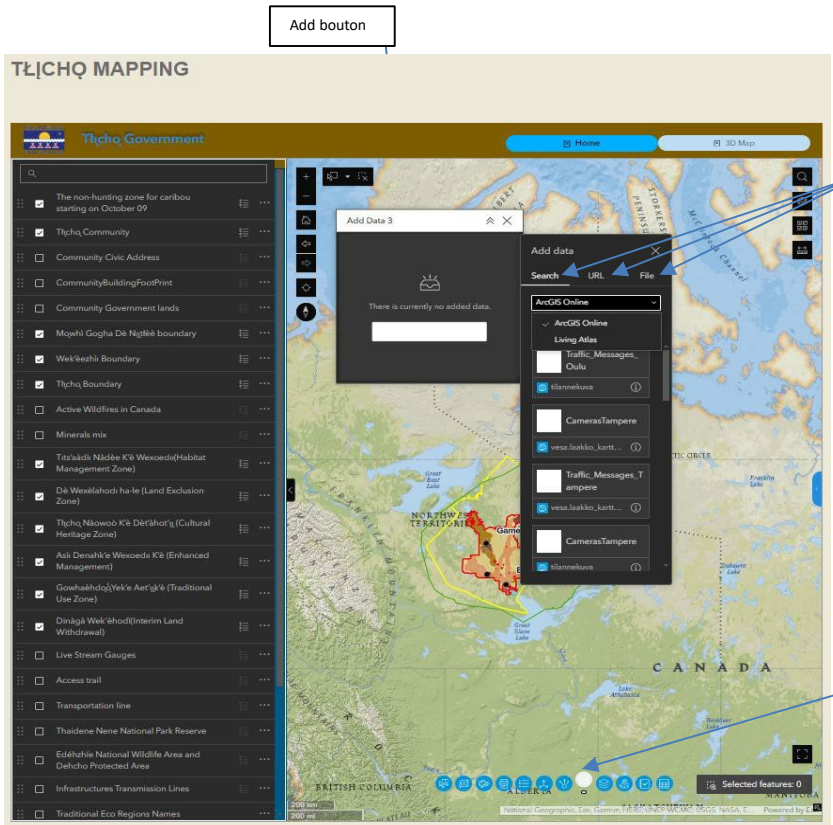


This map can be shared through social media, email, or QR code.



Tablet edition





Data can be added to the map in three ways

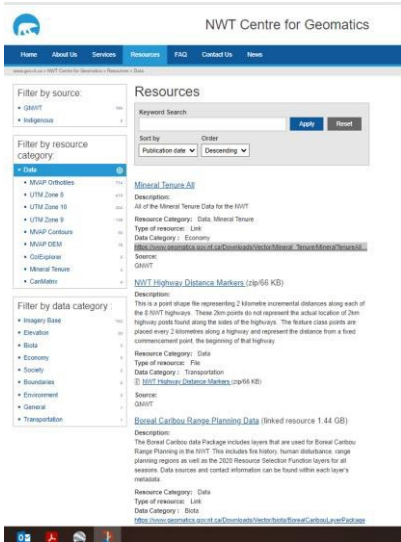
- 1 file. The shape file must be zipped. The file must be in KML format, GeolJson, GPX, CSV
- 2 URL
- 3 ArcGIS Online

Here are some useful GIS data sources to utilize in the ArcGIS Online search section.

Kindly download data from the following website as a zip file and add it to the map
https://www.geomatics.gov.nt.ca/en/resources/field_resource_category/data-3

ArcGIS Online:

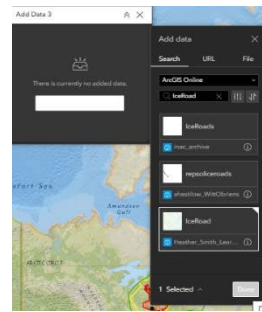
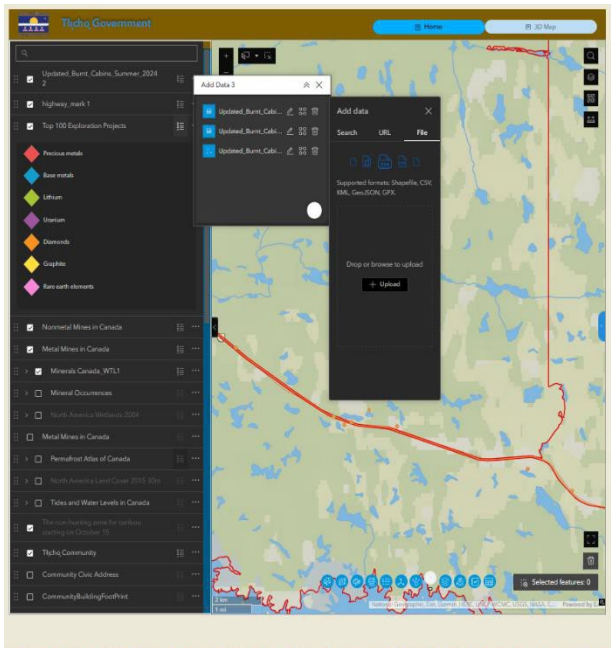
- Indigenous territories native land
- IceRoad
- VLi NWT Roads
- Vli Feature Map
- NWT Wint
- Winter Roads Canada QC data map (QC Data Map)



- Canada protected and conserved areas database (Canada Protected Areas)
- NWT (all web data)
- Barren ground caribou range map
- Mining claims in caribou range
- NWT Mineral Showings (2021)
- Caribou northwest territories
- Indigenous lands of Canada
- NLUIS_Layers_for_Online_2024_02_29_Final
- Indigenous Mining Agreements (May 2022)
- National park of Canada
- Canada forest fire
- Treaties in Canada
- Indigenous geographical names in Canada
- Indigenous place names 2020
- AK_NativePlaceNames
- Indigenous Place Names, Canada

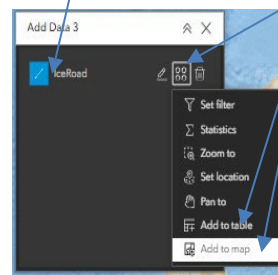
Living atlas:

- Permafrost Atlas of Canada
- North America Wetlands 2004
- Top 100 Exploration Projects Canada



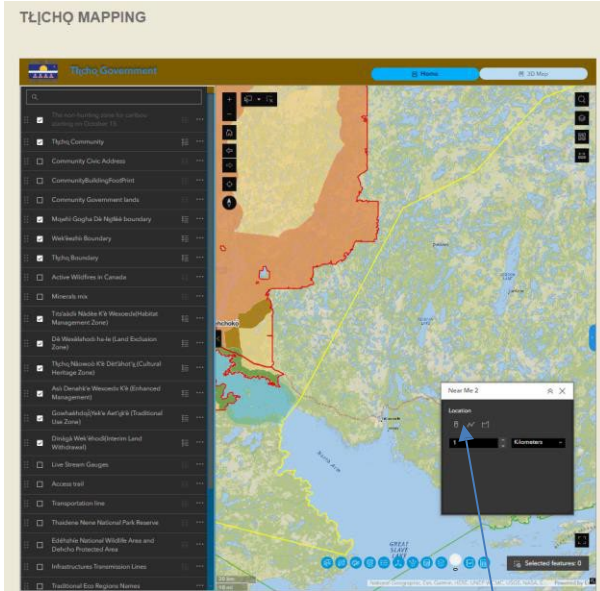
the data added to the list

Choose this option to add data to the attribute table or to include the data on the map.

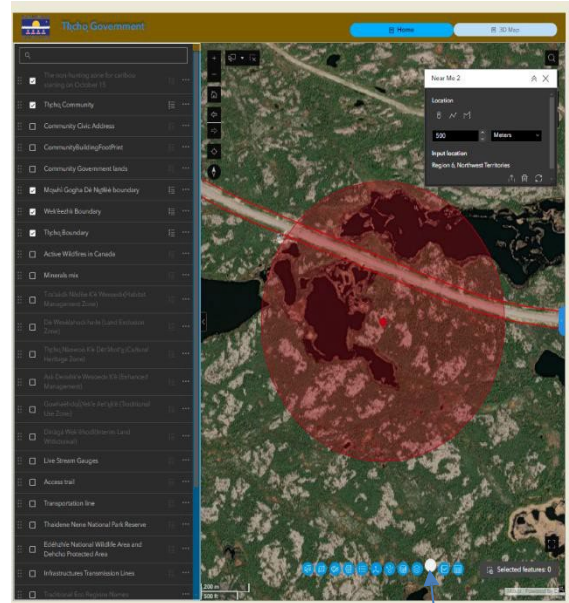


Select the "Set Filter" option to choose and visualize specific parts of the data on the map or add the data to the attribute table.

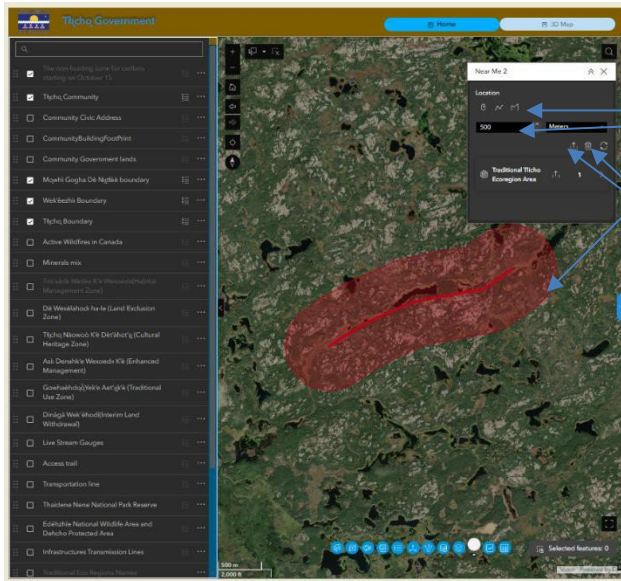
Buffering



Choose the type and size of the buffer.



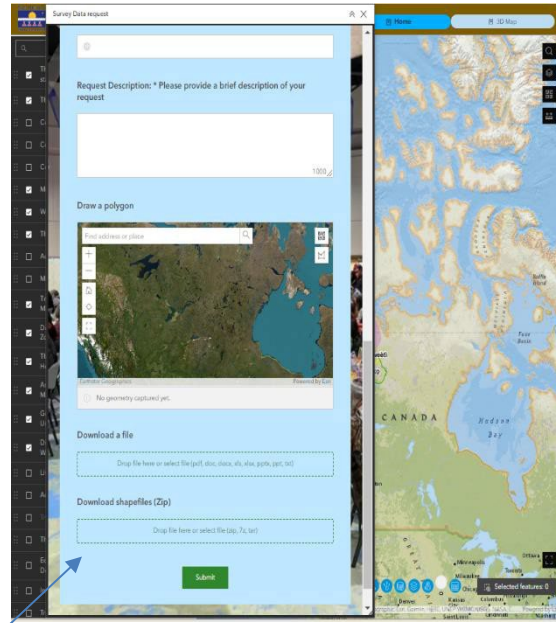
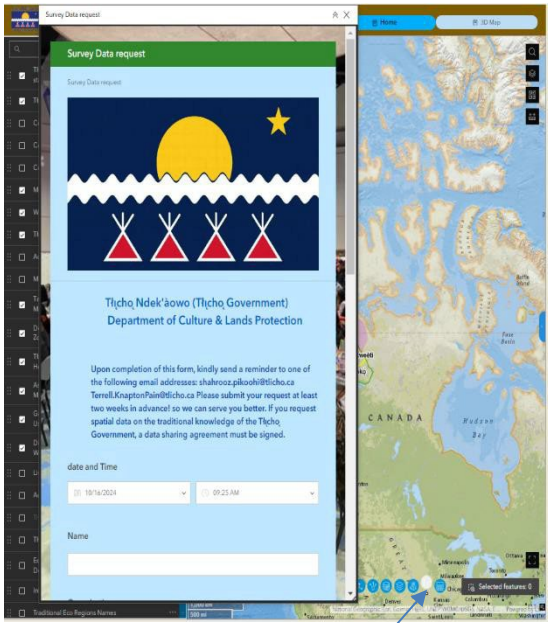
Choose the "Near Me" option to create a buffer around cabins, trails, or roads, ...



Choose the buffer type and size, then draw a feature on the road

- Delete the buffer
- Download the selected feature within the buffer zone.

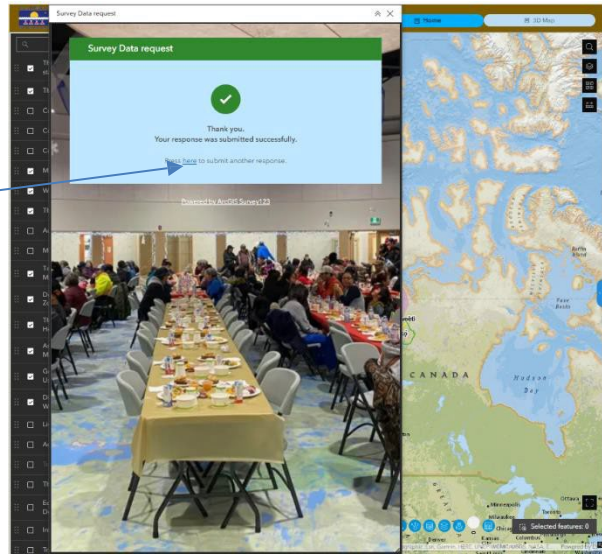
Tl̓icho Government GIS Data Request Form

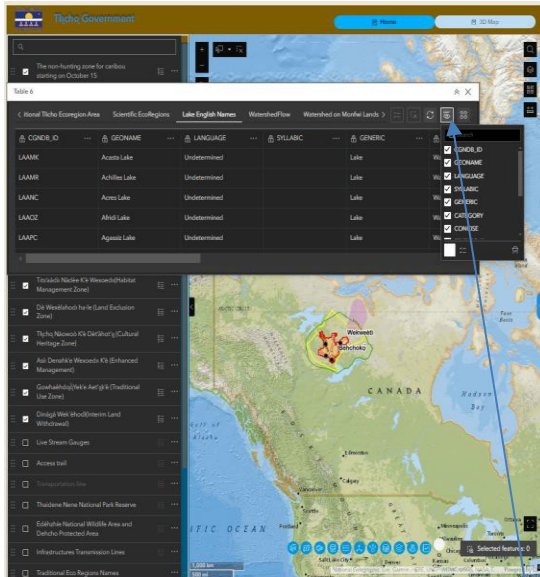


Choose the Survey Data Request widget.

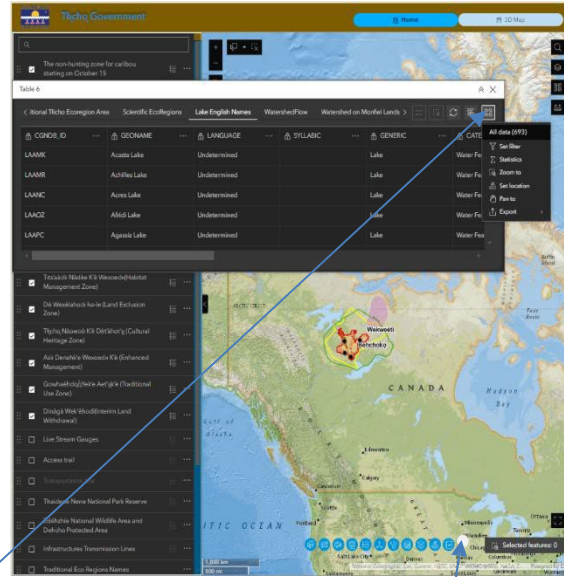
Please complete the form, upload the documents, send a reminder email, and submit the request.

Click here to refresh the page and fill out another form if necessary.



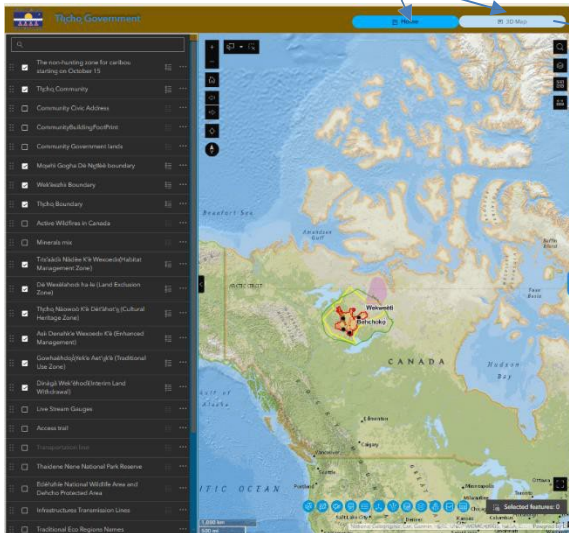


Use the other options as described on page 7



Click here to use the Table widget

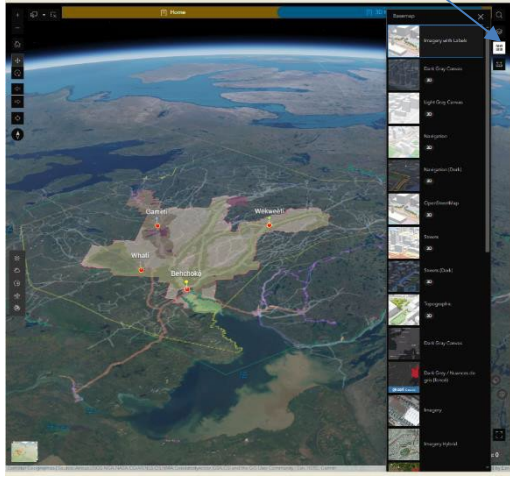
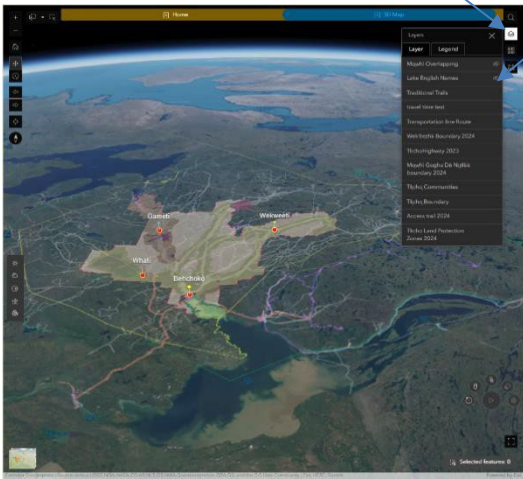
Click here to toggle between the



Click here to see the legend and the layers

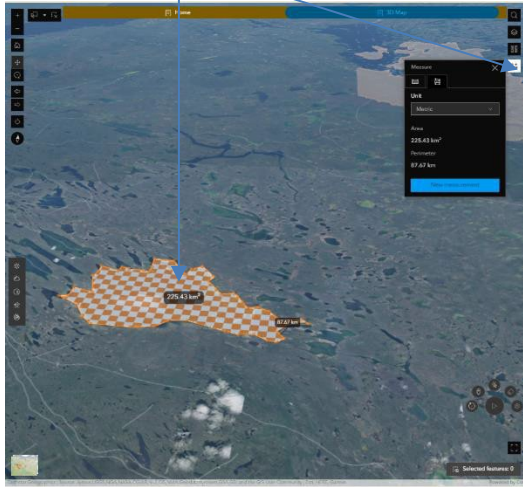
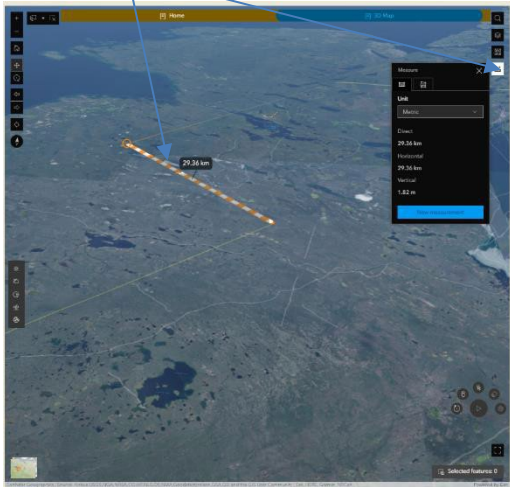
Click here to show or hide the layers.

Switch between base maps



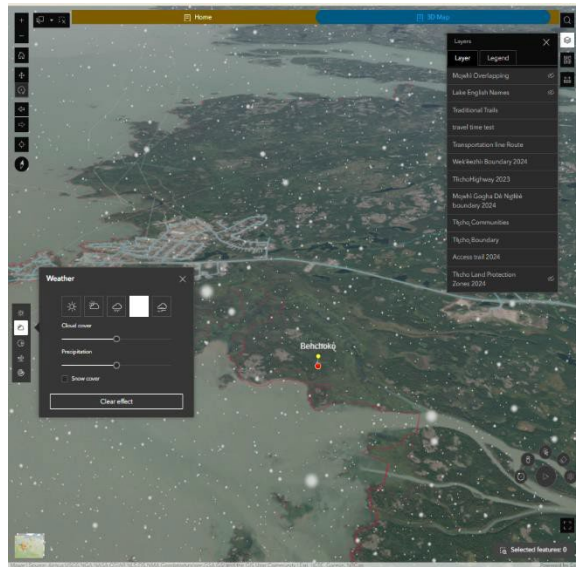
Measure a line.

Measure an area





Click here to watch videos explaining how this function works.



Use these functions to create a clip and record the screen

